

ATOM

THREE PHASE SCR POWER CONTROLLERS

FRAME SIZES: 16, 32, 50, 80A

VOLTAGE RANGE: 24-600 VAC



Analog Control

- Standard: 0-5 VDC, 4-20 mA Setpoints
- Field Scaleable: 0-10 VDC, 0-20 mA
- On/Off Relay Mode: 0, 4-32 VDC

Digital Fieldbus



DESCRIPTION



ATOM is an ultra-compact low cost microprocessor-based power controller to assist with control of AC loads.

Resistive or transformer-connected loads can be controlled in Zero Cross, Fast Zero Cross, or SSR Random Relay firing modes. Output is controlled linearly with respect to the command setpoint and can be set to command the RMS value of the voltage or current.

ATOM Power Controllers are available in current ratings from 16 to 80A. Auto-ranging voltage circuitry enables main line voltage from 24 - 600 Vac (45 - 65 Hz) eliminating the need for hardware jumpers or stocking multiple controllers for international voltages. A separate 24 Vdc power source supplies the control electronics and maintains critical communications to your control system when the mains are absent on digital units.

Status LEDs make operation and troubleshooting simple. A plug-n-play USB interface and free Control Panel app for your Windows PC or Android device further simplifies installing and configuring the controller to its designated application. For multiple controllers, controller settings can be duplicated by simply loading a configuration file saved from a previous unit.

Depending on the ATOM model, setpoints can be controlled through either the analog or digital fieldbus interface. The factory-configured analog setpoint signal range is 0 - 5 Vdc, setpoints are field scalable from 0 - 10 Vdc or 0 - 20 mA.



FEATURES

Input

- Auto-Ranging Input Voltage: 24 - 600 VAC +10/-15%
- Three Phase AC
- 2 Leg / 4 SCR
- 3 Terminals in / 3 Terminals out for simple installation

Output

- 0 - 600 VAC or Max Line Voltage
- Up to full frame rating at 122° F / 50° C, 6,000 ft

Control Features

Microprocessor based control with Digital Phase Lock

Control Modes

- Zero Cross, Fast Zero Cross, or SSR On/Off Relay mode

Feedback Modes

- Feed-forward Voltage, RMS Current, On/Off Relay mode, or Proportional (Open Loop)

Indicator LEDs

- Power (24V power, AC line status, phase loss indicator)
- Status (output state, alarms, limits, Partial Load Fault)

Analog Input (Analog model only)

Voltage

- 0-10V range (32VDC max in relay mode)
- 200k Ohm impedance

Current

- 0-20mA range
- 249 Ohm impedance

Line Voltage Compensation (not available in Proportional or On/Off relay mode)

Trans-Guard™ Prevents upstream heating of feeder transformers

Sync-Guard™ Load balance multiple controllers to prevent peak currents in feeders (available on Digital models only)

Missing Cycle Detection Ramps from 0 to setpoint upon missing AC cycle

Over-temperature

- Warning Alarm: Detects an abnormal operating temperature 5 degrees below limit (max operating temperature: 105° C)
- Shutdown: Protects controller in a critical over-temp condition

Over current-trip Protects the controller in the event of a load fault or arc to ground

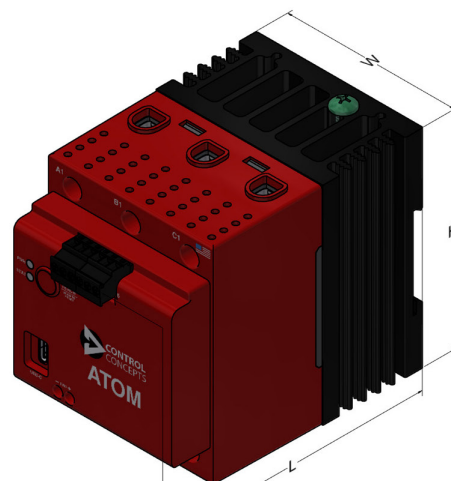
Current Limit Fixed standard at 105% of frame rating or adjustable with buy up.

Solid State Relay Output Rated: 60 VDC 100mA / 42 VAC 100ma RMS

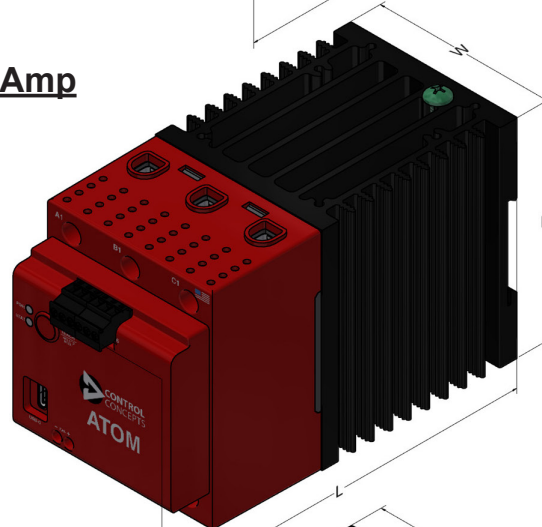
Teach / Reset Button Learn load resistance value or reset the controller.

USB-C interface Easy setup with Control Panel app

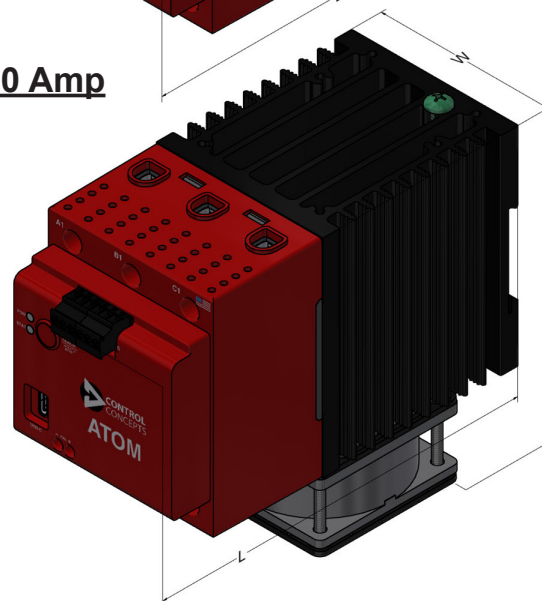
16 Amp



32 Amp



50, 80 Amp



Dimensions: Inches [MM]

| | | | |
|------|-----------------|----------------|-----------------|
| 16 A | H: 3.50 [88.9] | W: 2.80 [71.1] | L: 4.47 [110.9] |
| 32 A | H: 3.50 [88.9] | W: 2.80 [71.1] | L: 5.97 [151.6] |
| 50 A | H: 5.00 [127.0] | W: 2.80 [71.1] | L: 5.97 [151.6] |
| 80 A | H: 5.00 [127.0] | W: 2.80 [71.1] | L: 5.97 [151.6] |

OPTIONS

Adjustable Limits

- Voltage Limit (Average over time for zero cross) and RMS Current Limit 20 - 105% (Average over time for zero cross)

Alarms, Solid State Relay, Shorted SCR Detection

- Enables access to additional alarms options for external signaling with the built in solid state relay
- Short Detection determines if an SCR is failed ON with the option to map to alarm relay output.

Partial Load Fault (included with Alarms package)

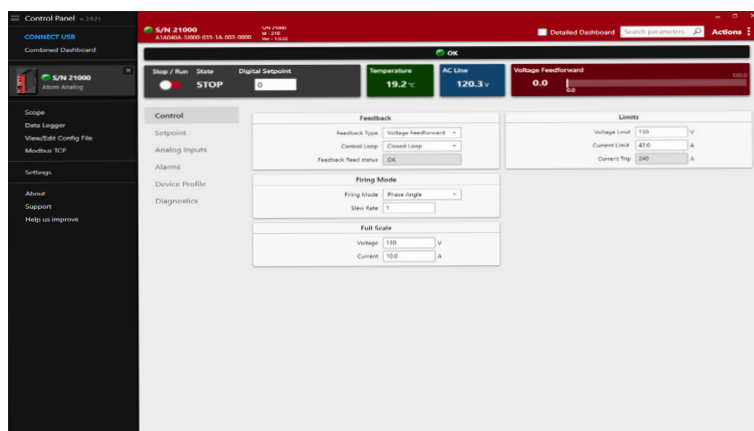
- Monitors changes in load resistance. An alarm will activate if the load changes by a user configurable percentage.
- One-button relearn, save live load resistance value to the controller with the touch of a button.

CONTROL PANEL APP

Control Panel Interface

- Microsoft Windows PC and Android device support
- USB-C interface
- View live operating parameters and diagnostics
- Load / Save / Copy controller settings

Download the free Control Panel App at
www.ccipower.com



SPECIFICATIONS

POWER

| | |
|-------------------------------|--|
| Line Frequency (Auto Ranging) | 45 - 65 Hz |
| Frame Current Ratings (Amps) | Continuous RMS (AC) 16 32 50 80 |
| Current Rating - Peak Surge | 15x frame rating for 10 ms |
| Minimum Hold/Latch Current | 500 mA |
| Max Leakage Current | 1.2 mA @ 600 Vac 50/60 Hz |
| SCR Rating (PIV) | 1600 V peak forward & reverse |
| Fusing | Optional external Class T, branch-rated, touch-safe fusing |
| Thermal | Integrated thermal sensor |
| Current Limit (optional) | 20 - 105% |
| Power Dissipation | 1.3 W per A of load current per phase |
| Controller Input Power (DC) | 24 Vdc (+10 / -15%) |
| DC Power Consumption | 3 to 7 W (Frame dependant, see User Manual for detail) |

ENVIRONMENTAL

| | |
|--------------------------------|---|
| Surrounding Air Operating Temp | 32°F [0°C] to 122°F [50°C] (Deration for proximity placement may apply) |
| Humidity | 20% to 90% RH Non-condensing |
| Rated Operating Altitude | Up to 6000 ft [1829 m] at full rated current |
| Contaminates | RoHS Compliant, CE Pollution Degree 2 (only non-conductive pollution occurs) |
| Storage Temperature | -4°F [-20°C] to 176°F [80°C] |

ENCLOSURE PROTECTIVE RATING

| | |
|---------------|-------|
| International | IP 20 |
|---------------|-------|

PERFORMANCE

| | |
|----------------------------------|--|
| Setpoint Resolution | 10k |
| Internal Control Loop Resolution | 32k |
| Output Resolution | 30k @ 50 Hz, 25k @ 60 Hz |
| Response Time | Adjustable from 50 ms to 2 s |
| Accuracy (Full Conduction) | |
| Voltage | 5.0% of line voltage |
| Current | 5.0% of frame rating |
| Output Linearity | 4.0% from (5 - 100%) output range |
| Accuracy | (+10% / -15%) line voltage change will result in a max output change of 2% from (5 - 100%) output range |
| Temperature Drift | Output shall not change greater than 1% per degree C max over the operating temperature range from (5 - 100%) output range |

ISOLATION

| | |
|---------------------|---------------------------------|
| Signal to Line/Load | 3750 Vac minimum |
| Line/Load to Ground | 2500 Vac minimum |
| Line to Load | 1000 Vac minimum limited by MOV |
| Network | 500 Vac minimum |

RELIABILITY

| | |
|----------------------------------|----------------|
| Mean Time Between Failure (MTBF) | ~ 50,000 Hours |
|----------------------------------|----------------|

See the ATOM User's Manual for a full list of specifications.

MODEL NUMBERS

[illegible]

CONTACT & ORDERING



Tel. +1(952) 474 - 6200 or +1(800) 765 - 2799
8077 Century Blvd, Chanhassen, MN, 55317, USA

 www.ccipower.com



Information furnished by CONTROL CONCEPTS INC. is believed to be accurate and reliable. However, no responsibility is assumed by CONTROL CONCEPTS INC. for its use. CONTROL CONCEPTS INC. reserves the right to change the design or operation of the equipment described herein and any associated controller products without notice. CONTROL CONCEPTS Inc assumes no responsibility for any errors that may appear in this document. Information in this document is subject to change without notice.

FAST

**NEXT DAY
SHIPPING!**

Superior support, and over 40
years of technical expertise!